

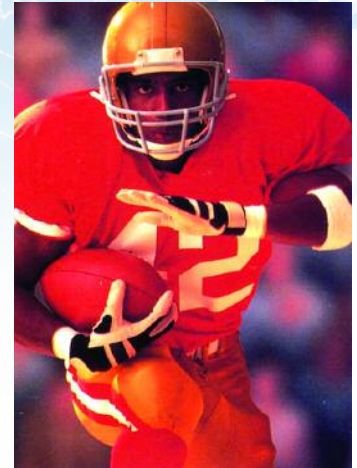
# Marubeni

## NFL FILMS STUDIO CENTRAL PLANT *Mt. Laurel, NJ*

MARUBENI SUSTAINABLE ENERGY, INC. - CASE STUDY

NFL Films Television and Motion Picture Studio is located in Mt. Laurel, NJ approximately 90 minutes south of Manhattan. This 3-story, 200,000 sq ft, glass-encased film lab is one of the nation's largest consumers of motion picture film.

Marubeni Sustainable Energy Inc. owns the central plant equipment and provides full operations management through a Building Operations Services (BOS) agreement with NFL Films. The BOS agreement provides 24/7 comprehensive central plant maintenance operations, security, housekeeping, landscaping, elevator maintenance, and fire protection services to this innovative facility.



### NFL Films central plant technical specifications:

- *(2) 400 ton centrifugal chillers; (1) 800 ton cooling tower; (13) air handling systems; (3) boilers; (150) electric heat / hot water coil VAV units and (2) emergency stand-by generators, one 600kW and one 2,000kW to ensure smooth operations.*
- *The plant provides the facility with all necessary thermal and emergency electricity energy requirements and supplies up to 800 tons of cooling and 6.81 mm/btu's per hour of heating/hot water.*
- *Aiding in the plant's success was the installation of a new HVAC boiler and chiller system at the time the building was initially constructed.*

### About Marubeni Sustainable Energy, Inc.

Marubeni Sustainable Energy Inc., a subsidiary of Marubeni Corporation, owns and operates renewable generation plants and on-site cogeneration and district plants for a range of utility, industrial, commercial, and manufacturing facilities throughout the U.S. Our power plants deliver lower cost energy providing our customers a competitive advantage by controlling their long-term energy sources and costs. Marubeni Sustainable Energy Inc. was established in 2006 in part through the acquisition of assets previously owned by DG Energy Solutions LLC. We are headquartered in San Diego, CA and have a regional office in Medford, New Jersey.

#### HEADQUARTERS

1660 Union Street, Suite 200  
San Diego, CA 92101  
Tel (619) 232-6564  
Fax (619) 232-6116

#### REGIONAL HEADQUARTERS

708 Stokes Road, Suite A  
Medford, NJ 08055  
Tel (609) 654-6166  
Fax (609) 654-6146

